



PANTHER PRINTS

March 2025 Newsletter

Spring is Here!

Dear Pathfinder Families,

Spring is finally here, and with it comes a season of growth, renewal, and exciting opportunities! As the flowers bloom and the days get longer, we are reminded that learning and personal growth are always in season at Pathfinder Career Academy. Keep up the great work students!

-The Pathfinder Team

Important Dates

- State Testing: March 31-April 25
- Spring Break: April 21-25
- Community Day: April 30

April 2025						
S	M	T	W	T	F	S
		1	2	3	4	5
6	7	8	9	10	11	12
13	14	15	16	17	18	19
20	21	22	23	24	25	26
27	28	29	30			

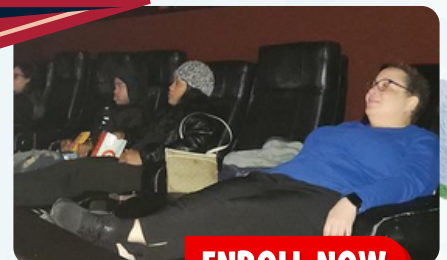
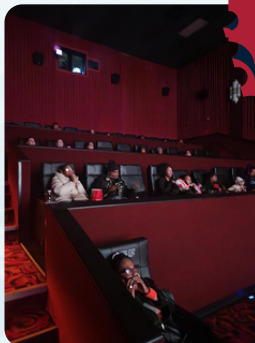
Mental Health Matters

If you or someone you know is struggling, help is available—call or text the **988 Suicide & Crisis Lifeline** for free, confidential support 24/7.

student
life



MOVIE



ENROLL NOW

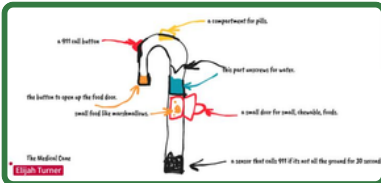
Re-Enrollment is OPEN
for 2025-2026!



SPRING

CTE Month Highlights!

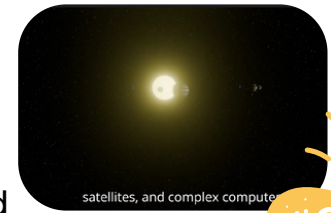
Kidviation Product Drawings (7th Grade)



Leader in Me Completers!
Ziona Coles
Bailey Fetty
Keyontea Walton
Anyeh Cunningham

Congratulations to our CTE Month Contest Winner – Rachel Barrington! Rachel explored the requirements and responsibilities involved in becoming an Astrophysicist. She then developed a digital presentation that outlined the career path, narrated the process from beginning to end, and highlighted various benefits, including the competitive salary.

Thank you to our March Future Friday Speakers!



Rachel's Video!

OSHA 10 Completers!
Shawn Lewis
Keith Sisko

CTE



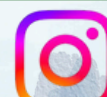
Special Education Update

Information about our Child Find Process: If you suspect your student may have learning problems that may indicate an educational disability, please discuss our MTSS process with your student's advisory teacher. Multi-tiered systems of support is a nationally recognized process to review students' progress as a team and recommend specific evidence-based strategies and interventions to provide extra support in addition to what is offered to all students. Progress is monitored throughout the process and a referral can be made for an evaluation if progress still isn't being made with supports and interventions in place. The goal of Multi-Tiered Systems of Supports is not to refer students for testing for special education, it is to help support students in their current courses; however, if interventions do not provide the expected progress with students, MTSS can lead to a referral. When utilized appropriately, though, the vast majority of students improve just with MTSS supports and never have a need for Special Education services. Scan the QR Code for more information!

SCAN ME



FOLLOW US



FOLLOW US